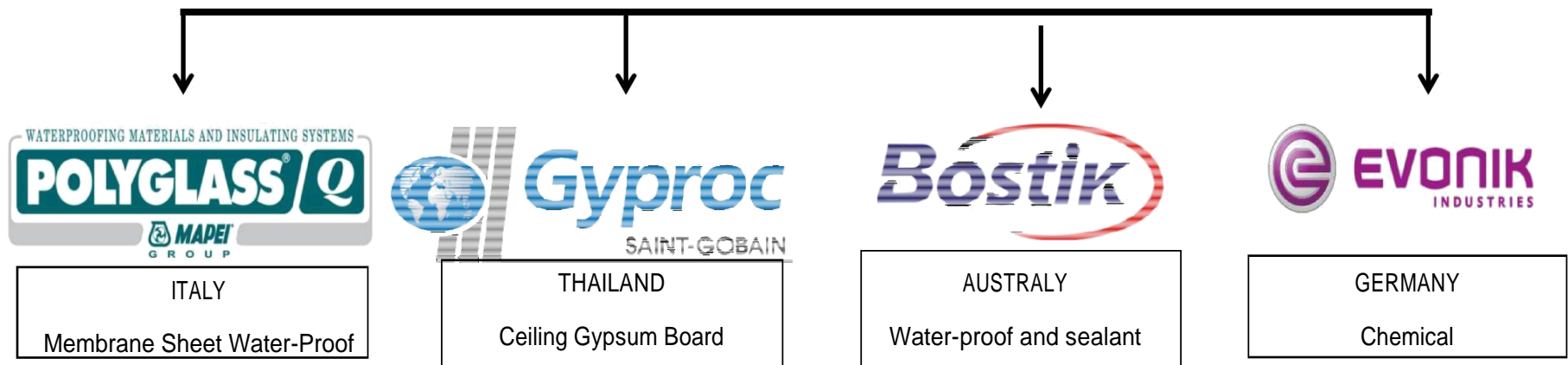
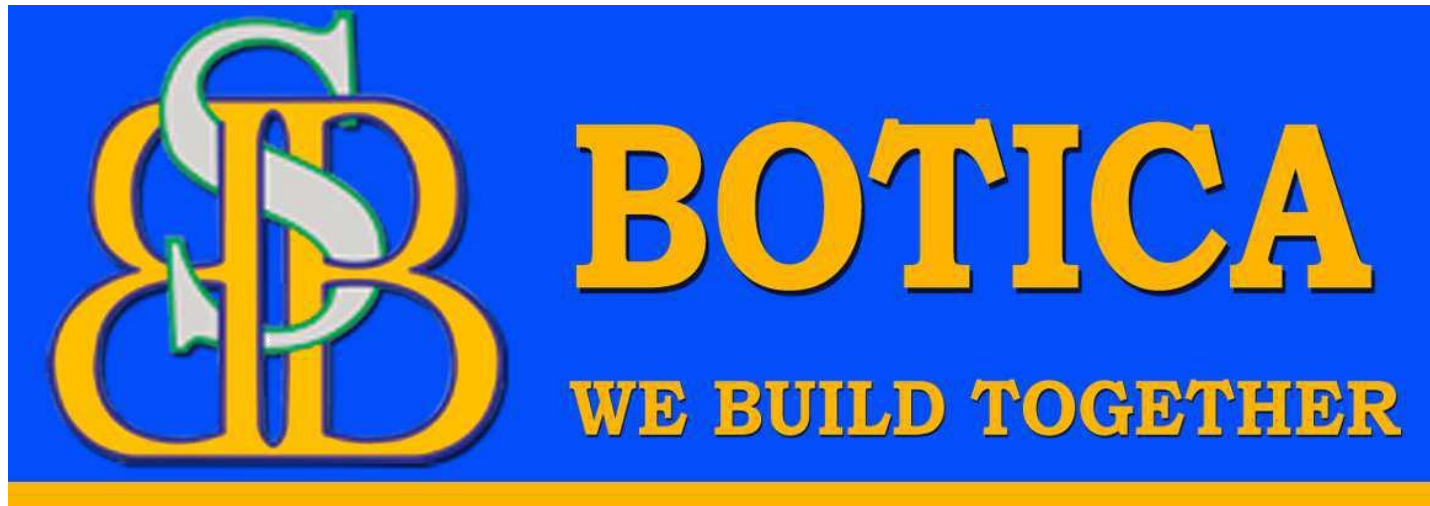


COMPANY PROFILE



CONSTRUCTION MATERIAL AND SERVICE SOLUTION



1-Introduction

2-Mission

3-Vision

4-Product chart

5-Company Organizational Chart

6-Company Registration and License

7-Project reference



INTRODUCTION

BOTICA was established 2006 and provide Construction Material cooperate:

1-BOSTIK is Adhesive Sealant (Australia)

2-POLYGLASS is Water-Proof (Italy)

3-GYPROC is Ceiling gypsum board (UK)

4-EVONIK is Chemical concrete admixture (German)

5-CORMIX INTERNATIONAL is Construction Chemical (Thailand) BOTICA

is construction material supply and provide technical service include installation system to Architect , Engineer, constructor and consultant for all ranges of Chemical, Waterproofing, Sealants, Adhesives, Concrete Admixtures, Flooring, Concrete repairs, Grouts, decorative Decorate paint, Ceiling Gypsum board and Epoxy system in high standard and high technology. Nowadays, BOTICA has supply and installation to foreign and local construction partner s building such as Apartment, Bridges, university, hospital, embassies, Bank, hotels, business centers, water tanks....



MISSION

BOTICA becomes to provide outstanding product value and services with serving its customers through consulting, responding from our professional teams into creating the construction solutions. As a team, the organization will promote high standards and professionalism in our work environment in our products and services .

BOTICA value the importance of our relationship with each of our client by making them a partner in each project. Considering their ideas and suggestions in the process to produce a satisfactory result for them.

To train and develop younger technical people and prepare them as an important part of the development of the country.



VISION

BOTICA aims to become a biggest company that provide construction material and service installation of the country that provides satisfaction to all it's clientele in the project .

BOTICA also target as among the pacesetters in the construction industry of the country to always adopt the best practices in all our projects in order to produce the best result in terms of workmanship and cost effectiveness.

Cementitious Repair Mortars & Grouts

DESIGNATION	DESCRIPTION	COVERAGE
BOTICA GROUT GP	Premixed cementitious grout for non critical applications.	SEE DATA SHEET
BOTICA GROUT 1000	Non shrink,pre-mix, cementitious,fine precision grout for gaps down to 5mm.	SEE DATA SHEET
CONDUR EA1	A 2 component solvent free epoxy adhesive and concrete repair material. Pourable & paste grade.	SEE DATA SHEET
CONDUR EA2	A 2 component solvent free epoxy adhesive for bonding fresh concrete to old, hardened concrete mortar	5-6 m ² /litre.
CONDUR ANCHOR	A 2 component moisture insensitive general purpose epoxy adhesive in dual component cartridges for ease of application.	SEE DATA SHEET
CONPLUG	Ready to use powder, fast setting permanent water plug.	SEE DATA SHEET
BOTICA CRYSTALLIZATION	A unique chemical treatment/concrete corrosion protection and waterproofing by crystallization in liquid form. Penetrates the concrete to form a subsurface membrane. A unique chemical treatment	5 m ² /litre.
PU INJECTION	PU Foam for repair concrete and block water from wall and concrete slab.	

BOTICA BONDING ADHESIVE

DESIGNATION	DESCRIPTION	COVERAGE
SEAL N FLEX 1	polyurethane-based used in waterproofing system (wall, curb and drain terminations)	SEE DATA SHEET
NO MORE NAIL	synthetic rubber based suitable interior or exterior construction work (Being highly water resistant)	SEE DATA SHEET
BOTICA LATEX	Styrene butadiene emulsion, Bonding layer and mixing with cement sand for concrete repair material.	SEE DATA SHEET
BOTICA ONE	Styrene Butadiene for concrete water-proof system .	SEE DATA SHEET
SILICON SEALANT	Neutral Cure silicone sealant for use in metal fabrication, weather sealing and construction sealant.	SEE DATA SHEET
SEAL A GAP	Acrylic Sealant for general purpose provide economic sealant, excellent adhesion for gap and low movement joint.	SEE DATA SHEET
EXPENDA FOAM	Foam use in dispense and install through the straw adapter include with each can and will expand. It will greatly reduce noise, dust and draughts and will block access by rodents.	SEE DATA SHEET
CONCRETE PROOF	Silicon base for premix with cement sand to block water of concrete .	SEE DATA SHEET

BOTICA WATER-PROOF COATING

DESIGNATION	DESCRIPTION	COVERAGE
BOTICA BOSCO	2-component flexible acrylic polymer cementitious waterproofing bond coat has excellent weathering resistance and crack bridging property. two-component alkali reactive polymer modified	SEE DATA SHEET
BOTICA SLURRY	waterproofed coating for toilet, water tank.	SEE DATA SHEET
BOTICA RC2	One component flexible waterproofing emulsion that cures into a tough elastic waterproofing film.	SEE DATA SHEET
BOTICA PU	polyurethane elastomeric waterproofing membrane that dried to form a tough resilient film.	SEE DATA SHEET
ROCK COAT	Bituminous Emulsion is a stable, water-based product that is dark brown in colour and dries to a black coating.	SEE DATA SHEET
PROTECTOSIL SCC	Aqueous formulation based on silane chemistry for an easy to clean treatment of porous, mineral surfaces.	SEE DATA SHEET
LOTUS PROOF	Silicone base for water resistance as an admixture and penetrating sealer.	SEE DATA SHEET

BOTICA MEMBRANE SHEET AND PVC

DESIGNATION	DESCRIPTION	COVERAGE
ALUMINIUM MEMBRANE SHEET	Glass fibre reinforcement to a bitumen base with filler and positioning inside the bituminous mass guarantee resistance to even the most abrupt temperature change.	SEE DATA SHEET
MEMBRANE SHEET GRANITE 4.5KG,5kg	Plastomeric waterproofing membranes with good quality, made of a distilled bitumen-based compound modified with polypropylene and non-woven polyester fabric reinforced and stabilized by longitudinal glass fibre.	SEE DATA SHEET
MEMBRANE SHEET SAND 3MM,4MM		SEE DATA SHEET
ADHESIVE MEMBRANE SHEET	A bituminous membrane with glass fibre. its polyester and special to used as an under layer for roofing tiles.	SEE DATA SHEET
MEMBRANE SHEET TPO/PVC	A special design optimal solar reflectance reduces of over 50% the roof temperature.	SEE DATA SHEET
PRIMER	Block dust and porosity of concrete surfaces allowing the quick application of the bituminous membranes	SEE DATA SHEET
PVC WATER STOP	Design for water retaining and water excluding structures where a positive seal is require for poured in situ concrete expansion.	SEE DATA SHEET
HYDROPHILIC WATER STOP	Unique sealing compound which expands in a controlled fashion when exposed to moisture, forming a compression seal in concrete joint.	SEE DATA SHEET

BOTICA PAINT COATING

DESIGNATION	DESCRIPTION	COVERAGE
V-MOLD PAINT (Gypsum Paint)	Design for Gypsum board to reduce/ eliminate solvents in order to create low to no VOC coatings.	SEE DATA SHEET
Q-PAINT (Matt Paint)	Matt Paint for use internal or external concrete wall and Low to No VOC Coating.	SEE DATA SHEET
CRYSTAL/DIAMOND/ GLOSS SHIELD (Water base Emulsion)	100% Pure Acrylic suitable for exterior/interior to protect the exterior surfaces, sun light protect, dirt pick up, Alkali, Algae, Fungus and weather moisture resistance.	SEE DATA SHEET
WATER SEAL (Water repellent)	Silicon based paint with special formulated for water-proof paint, Nano Paint, Low VOC, Low odour and suitable for exterior/interior walls to protect the exterior surfaces.	SEE DATA SHEET
SEALER (Water base)	Specially modified styrene butadiene rubber Primer, special formulation for bonding and alkali resistant sealer.	SEE DATA SHEET
RUMDOL (Semi-Gloss Enamel)	Alkyd-based enamel is a weather resistant has outstanding adhesion. It's suitable for steel and wood surfaces.	SEE DATA SHEET
OXIDE SEALER (Solvent Base)	Design for protect steel and good adhesion for gloss paint.	SEE DATA SHEET
PRIME SEAL (Solvent Base)	Design for Excellent adhesion for cravenite steel and wood coating.	SEE DATA SHEET

BOTICA POWDER MOTAR

DESIGNATION	DESCRIPTION	COVERAGE
NATA (Tile Adhesive cement)	Hydroment NATA thin set mortar adhesive are composed of select, proprietary chemicals, carefully graded aggregates and portland cement.	SEE DATA SHEET
C-PLAST (Cement Plaster)	Cement Base carefully composes high grade chemical with cement sand. It is ready to use mortar for plaster of concrete and brick walls installation that increases density, bonding and quality of plaster with reducing shrinkage.	SEE DATA SHEET
E-PLAST/SAVE PLAST/ EXTRA PLAST (Putty plaster)	Calcium Carbonate and port-land Cement based with special formulated for exterior and interior walls to protect the exterior surfaces. It's provide smooth, gloss, more sticky with reduced embedded carbon footprint.	SEE DATA SHEET
DIAMOND GROUT (Special tile grout)	Special tile grout for reduce water resistance and good adhesion.	SEE DATA SHEET
NAGROUT (Tile Grout)	Ready mixed to use for design tile grout.	SEE DATA SHEET
FLOOR HARDENER (Non metallic)	A ready-to-use coloring and hardening agent for concrete floor surfaces subjected to light and moderate duty.	SEE DATA SHEET
COATE TIMER	Coate Timer One Part Timber Floor Coating is a single	

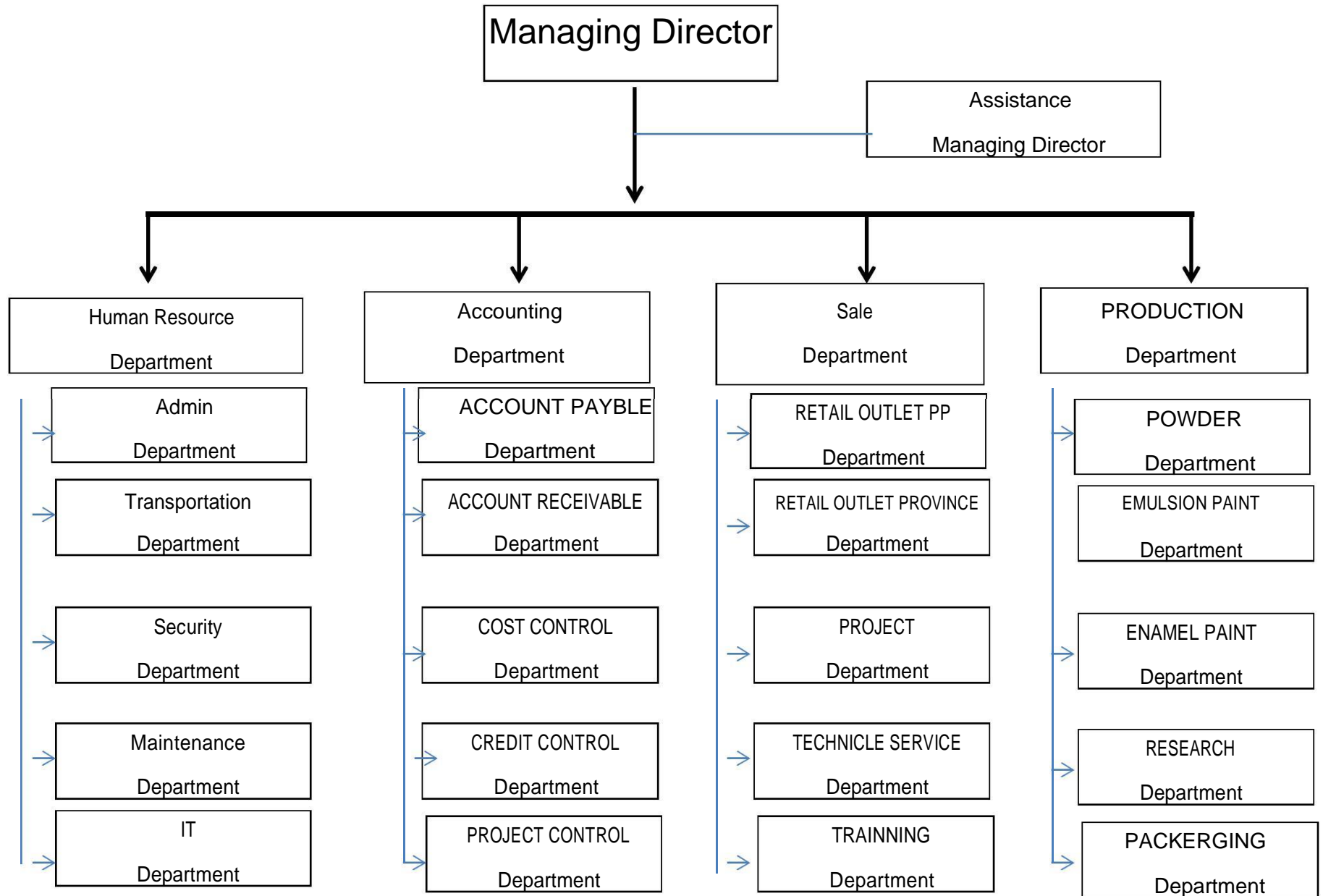
BOTICA GYPSUM SYSTEM

DESIGNATION	DESCRIPTION	COVERAGE
REGULAR BOARD (8/9/12/13/15mm)	Gypsum plasterboards particularly suitable for use in situation where fire protection, sound and thermal insulation are required.	SEE DATA SHEET
MOITURE BOARD (9/12/12.5/15mm)	Moisture Resistant Board is a multi-purpose board intended for use within the construction of external or internal walls and roofs.	SEE DATA SHEET
DUARLINE BOARD (13mm)	Wallboard is a high performance modified higher density with glass fibre and fumed silica, contained in a strong provide combined fire, used in wall linings and partitions.	SEE DATA SHEET
FIRE BOARD (Fire resistance)	Fire-stop Board is a gypsum plasterboard containing fire retard additives in the core to improve its fire protection.	SEE DATA SHEET
ACOSTIC BOARD (Sound resistance)	Mineral fire ceiling is high density technology for wet-felted slap wool is not contain waste-paper.	SEE DATA SHEET
SHERA BOARD (Fiber cement board)	Design for internal and external use for strong moisture resistance.	SEE DATA SHEET
Ceiling Frame (Support gypsum)	A high quality galvanized steel bead is a key part of frame system. It consists of perimeter channels which are fixed with the longer leg towards the lining.	SEE DATA SHEET

BOTICA EPOXY SYSTEM

DESIGNATION	DESCRIPTION	COVERAGE
LEVELLING COMPOUND (Cementitious)	a ready-to-use liquid chemical floor-hardener and dust-proofer base on metallic silicofluorides and very special wetting agent to provides deeper penetration to concrete.	SEE DATA SHEET
EPOXY COATING (Solvent Base)	A high performance, self smoothing solvent free seamless epoxy floor coating capable of being applied at varying thickness to suit the final use of the floor.	SEE DATA SHEET
EPOXY LEVELLING (Solvent Base)		SEE DATA SHEET
PU EPOXY COATING (PU FLOOR)	A high performance, self smoothing solvent free seamless PU epoxy floor coating for external concrete and applied at varying thickness to suit the final use of the floor.	SEE DATA SHEET
PU EPOXY LEVELLING (PU FLOOR)		SEE DATA SHEET
EPOXY PRIMER (SOLVENT BASE)	Suitable for any kind of applications such as weirs, interior of pressure pipe- lines, gates, penstocks, etc.	SEE DATA SHEET
ACCESSORIES		SEE DATA SHEET

COMPANY ORGANIZATION CHART





National Parliament

Constructor Company: Lychhoung

Product Use:

1-Gloss Shield

2-Crack Seal

3-Art Plus

5-Ceiling

6-V-Mold

7-Rumdol





Project Name: Courtyard

Product Use:

1. Nata

2. Botica Bosco

3. C-Plast

4. Stick Shield

5. Gloss Shield

6. Touch on Sand

7. Rumdol



Project Name:Prey Veng Hall

Constructor:Lychhoung

Product Use:

1-C-Plast

2-Primer

3-Crystal





Project Name: Rose
Condo Contractor :
OCIC Product use :

1. NATA
2. BOTICA GROUT 1000
3. E-PLAST
4. WATER PLUG
5. Water Proof

Project : Marriot Hotel

Contractor: Koh Investment co.,ltd

Product use :

1. NATA
2. BOTICA GROUT 1000
3. C-PLAST
4. PAINTING
5. WATER PLUG
6. Water Proof
7. Ceiling Gypsum





Project Name : Golden Tower 42
Constructor : Hanil Construction
Product use :

1. Water-Stop
2. BOTICA GROUT 1000
3. C-PLAST
4. WATER PLUG
5. Water Proof



Project : Diamond One
Constructor: Yonan Construction Co.,ltd

Product use :

1. WATER PLUG
2. Water Proof Membrane
3. Ceiling Gypsum System





Project Name : Bongkang Kong I (SNN)

Constructor : UTS Conctruction

Product use :

1. Water-Stop
2. BOTICA GROUT 1000
3. WATER PLUG
4. Water Proof Membrane
5. Water Proof Coating



Project : Ministry of Land
Management Urban
Planning and Construction

Constructor: Meng Construction Co.,ltd

Product use :

1. C-PLAST
2. E-PLAST
3. PAINTING
4. Water Proof Coating



Project Name : Mekong View Tower
Constructor : Mekong Construction

Product use :

1. Water-Stop
2. BOTICA GROUT 1000
3. WATER PLUG
4. Water Proof Membrane
5. Water Proof Coating



Project : ONE PARK
Constructor:

Product use :

1. C-PLAST
2. E-PLAST



- Project Name : Conditate Ministry
Constructor : Ly Chhoung Construction
Product use :
1. Water-Stop
 2. BOTICA GROUT 1000
 3. WATER PLUG
 4. Water Proof Membrane
 5. Water Proof Coating
 6. NATA
-



- Project Name : Conditate Ministry
Constructor : Cina Conctruction
Product use :
1. Water-Stop
 2. BOTICA GROUT 1000
 3. WATER PLUG
 4. Water Proof Membrane
 5. Water Proof Coating
 6. NATA



Project Name : SORIYA CENTRAL POINT

Constructor : OCIC Conctruction

Product use :

1. C-PLAST
 2. CRACK SEAL
 3. DIAMOND PAINT
 4. GYPSUM PARTION WALL
 5. COMPRESSING BOARD PARTION
 6. NATA
-

Project Name : THE BRIDGE

Constructor : SINO Great Wall

Product use :

1. Water-Stop
2. BOTICA GROUT 1000
3. CONDUR EA1
4. Water Proof Membrane
5. CEILING GYPSUM SYSTEM



Project Name : NAGA WORL

Constructor : SINO GREAT WALL

Product use

1. Water Stop
2. Condur EA1
3. Water Proof membrane
4. Ceiling Gypsum System
5. BOTICA Grout 1000



Project Name : ALEEZE

Constructor : OCIC Conctruction

Product use :

1. Water-Stop
2. BOTICA GROUT 1000
3. CONDUR EA1
4. Water Proof Membrane
5. CEILING GYPSUM SYSTEM
6. PAINTING



Project Name : OLympia CONDO

Constructor : OCIC CONSTRUCTION

Product use

1. Water Stop
2. Condur EA1
3. Water Proof membrane
4. Ceiling Gypsum System
5. BOTICA Grout 1000
6. C-PLAST
7. STICK SHIELD
8. GLOSS SHIELD
9. NATA
10. SEAL N FLEX 1



Project Name: NORO Super Market

Constructor:PT&C

Product Use:

1-C-Plast





Project Name:

Constructor Name:Urban Archictect

Product Use:

Torch On membrane





Project Name: Oknha Kit Meng Villa

Constructor Name: Urban Architect

Product Use:

1-Torch On membrane

2-Water Seal Paint



